

Louis R. Cross
 23682 Road 15³/₄
 Chowchilla, CA 93610
 559 665-1001

O Scale
 First With Accurately
 Scaled Rail
 Since 1963



PROTO:48 TRACK COMPONENTS

RAIL- Custom Drawn to Prototype Cross Sections



Code	148	138	125	100	81/83
Weight	132-136#	112-130#	90-100#	75#	52#
	AREA	AREA	AREA	ASCE	AREA
Nickel silver /100'	\$79.00	see note 1	\$65.00	n/a	\$38.00
Steel /100'	\$50.00	see note 2	\$37.00	\$34.00	n/a
	(Packaged in 99' bundles)				

Note 1: Code 138 rail is scaled after SP/UP 112 lb/yd and PRR/NKP 130 lb/yd rail installed in the 1920-1950 era

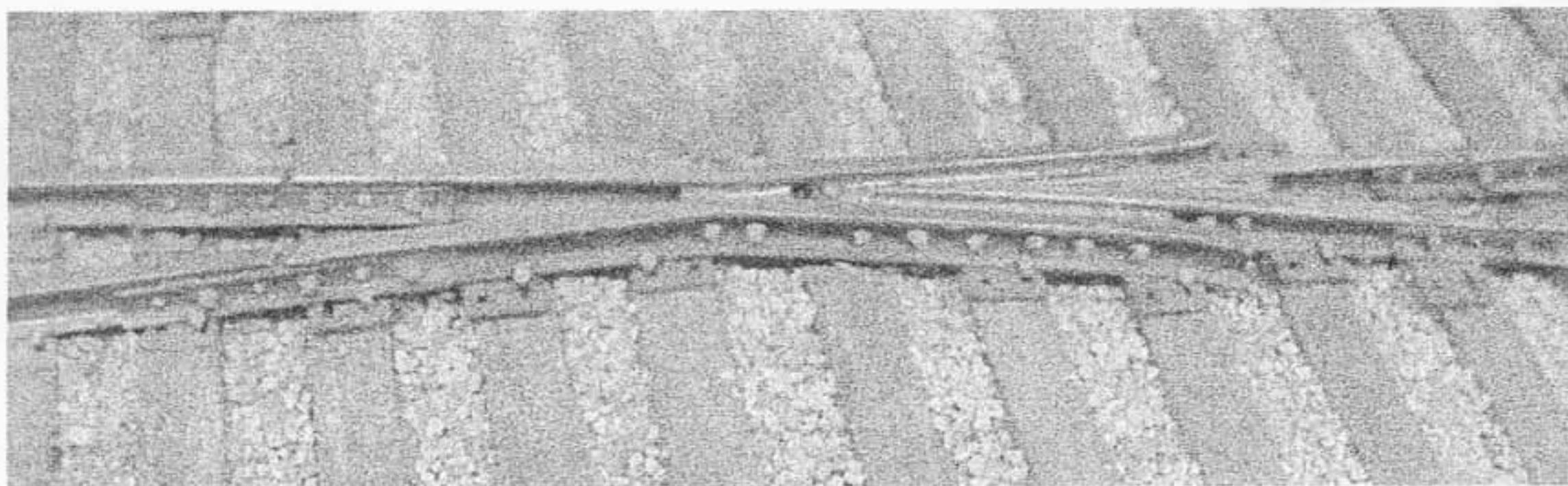
Note 2: Rail length is in multiples of 39 scale feet.

In 48³/₄" lengths (5 - 39' lengths) 24 pieces (97'-6" of rail) nickel silver \$73.00, steel \$44.00

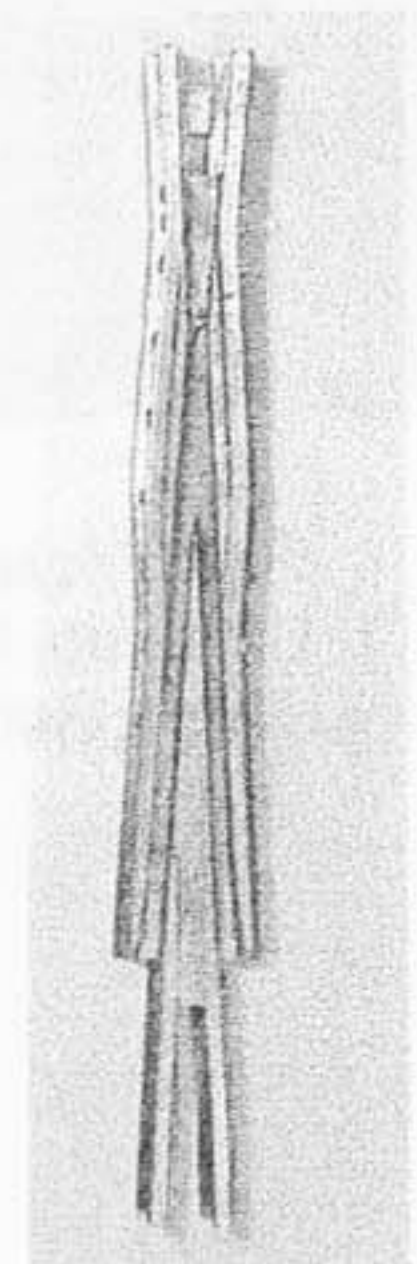
In 68¹/₄" lengths (7 - 39' lengths) 17 pieces (96'-6" of rail) nickel silver \$73.00, steel \$44.00

Turnout and Crossing Parts

NOTE: All track detail parts are Highly Detailed Nickel Silver Investment Castings in Lead-free Nickel Silver



Typical Bolted Frog



FRB48-8

FB48-6	Frog, Bolted Type #6	Code 148 rail	\$ 9.00
FB48-7	Frog, Bolted Type #7	Code 148 rail	\$ 9.00
FB48-8	Frog, Bolted Type #8	Code 148 rail	\$ 9.00
FB48-10	Frog, Bolted Type #10	Code 148 rail	\$ 9.00
FRB48-8	Frog, Railbound #8	Code 148 rail	\$ 9.00
FRB48-10	Frog, Railbound #10	Code 148 rail	\$ 9.00
FB25-5	Frog, Bolted Type #5	Code 125 rail	\$ 9.00
FB25-6	Frog, Bolted Type #6	Code 125 rail	\$ 9.00
FB25-7	Frog, Bolted Type #7	Code 125 rail	\$ 9.00
FB25-8	Frog, Bolted Type #8	Code 125 rail	\$ 9.00
FB10-5	Frog, Bolted Type #5	Code 100 rail	\$ 9.00
FB10-6	Frog, Bolted Type #6	Code 100 rail	\$ 9.00
FRB25-8	Frog, Railbound #8	Code 125 rail	\$ 9.00

Louis R. Cross
 23682 Road 15½
 Chowchilla, CA 93610
 559 665-1001

O Scale
 First With Accurately
 Scaled Rail
 Since 1963



Turnout and Crossing Parts

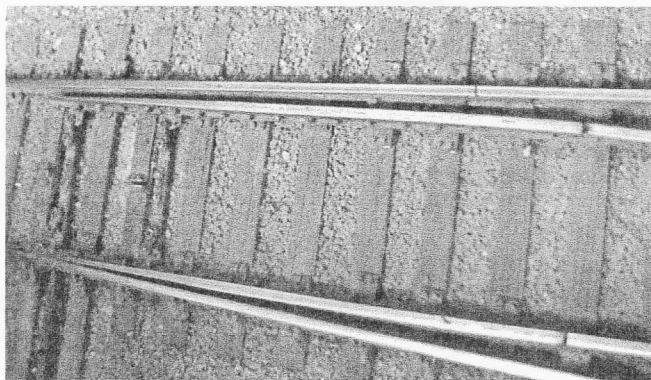
GRP38TP	Guard Rails W/ tie plates	Code 138	16' - 6"	\$12.00 / pr.
GRP38	Guard Rails	Code 138	11' - 0"	\$9.00 / pr.
GRP25	Guard Rails	Code 125	11' - 0"	\$ 9.00 / pr.
GRP10	Guard Rails	Code 100	8' - 3"	\$ 9.00/ pr.
GRP10	Guard Rails	Code 100	11' - 0"	\$ 9.00 / pr.



GR38

P48-16	Switch Points, 16'-6"	Code 148		\$ 8.00 / pr.
P48-20	Switch Points, 20'	Code 148		\$ 8.00 / pr.
P38-16-6	Switch Points, 16'-6"	Code 138		\$10.00 / pr.
P25-10	Switch Points, 10'	Code 125		\$ 8.00 / pr.
P25-16	Switch Points, 16'-0"	Code 125		\$ 8.00 / pr.
P25-16-6	Switch Points, 16'6"	Code 100		\$10.00/ pr.
P10-11	Switch Points, 18'	Code 100		\$10.00 / pr.
P10-12	Switch Points, 12'	Code 100		\$10.00 / pr.
P10-16-6	Switch Points, 16'-6"	Code 100		\$10.00 / pr.

(Above sets require no filing)

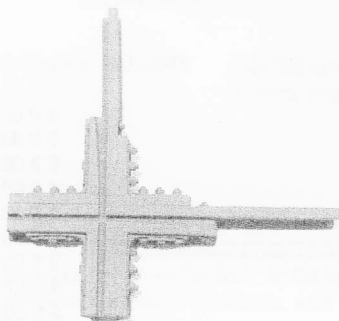


SSP48 Slip Switch, End points Code 148 \$32.00 / set of 4
 MP48-8 Movable center points, #8 slip switch or
 7° x-ing Code 148 \$14.50 / set of 4

SSP25 Slip Switch, End Points Code 125 \$32.00 / set of 4
 MP25-8 Movable center points, #8 slip switch or
 7° x-ing Code 125 \$14.50 / set of 4

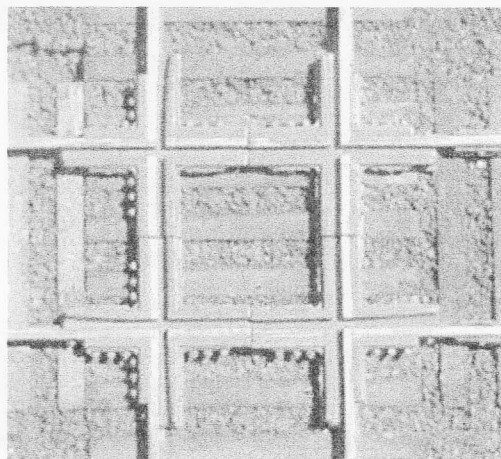
PMP48-1 Point/Mate set for Street Trackage (left or right)
 CRP48-90 Crossing, 90 °
 TR Throw Rod, Insulated, to tie switch points

Code 148 \$19.00 / set of 4
 Code 148 \$25.00 / set of 4
 \$ 3.75 / set



CRP48-90

CRP48-90



Louis R. Cross
 23682 Road 15¼
 Chowchilla, CA 93610
 559 665-1001

O Scale
 First With Accurately
 Scaled Rail
 Since 1963



Switch and Track Parts

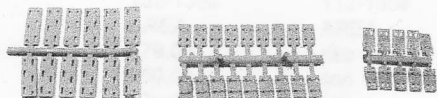
Super detail investment castings

Rail Braces

RB48	With tie plate integral, Code 148	12 / \$ 8.00
RB25	With tie plate integral, Code 125	12 / \$ 8.00
RB10	With tie plate integral, Code 100	12 / \$ 8.00
RB48-2	With out tie plate, Code 148	12 / \$ 5.95
RB25-2	With out tie plate, Code 125	12 / \$ 5.95
RB10-2	With out tie plate, Code 100	12 / \$ 5.95

Tie Plates

TPC-1	Tie plate 14" canted, plastic, for Code 148 or Code 125 rail	200 / \$ 5.50
TPF-2	Tie plate, 14" flat, plastic, for Code 148 or Code 125 rail	200 / \$ 5.50
TPF-3	Tie plate, 10" flat, plastic, for Code 100 rail	200 / \$ 5.50
TPF-4	Tie plate, 24" flat, plastic, for turnouts, Code 148 or Code 125	48 / \$ 3.25

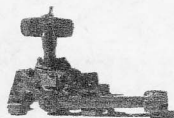


Gauge Plates

GP48	Gauge plate, 8 pieceset for one turnout, Code 148	1 set / \$ 5.50
GP25	Gauge plate, 8 pieceset for one turnout, Code 125	1 set / \$ 5.50
GP10	Gauge plate, 8 pieceset for one turnout, Code 100	1 set / \$ 5.50

Switch Stands

SSJ	Switch stand, San Juan Car Co., non-op, plastic, 1 high and 1 low	1 set / \$ 3.95
SSBS53	Switch stand, Bethlehem steel #53, non-op, brass, low	1 kit / \$ 9.95
NBC48	Nut/Bolt/Washer castings (for 45° crossing, adjustable)	1 set / \$25.00
CIGT01	Caboose Industries Ground Throw	1 ea / \$ 3.00



SSBS53

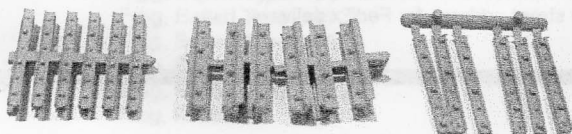


CIGT01

Rail Joiners

*(Rail joiners are available for Code 148 and Code 125 rail and come in three styles;
 Investment cast nickel-silver slip-on with all nut and bolt detail, order **NJ**,
 Slip-on plastic for insulated joints, order **IJ**
 Cement-on plastic for applying to plain rail to simulate joints, order **CJ**.)*

NJ48	Joiners, Code 148, slip-on nickel-silver	12 / \$ 8.00
NJ25	Joiners, Code 125, slip-on nickel-silver	12 / \$ 8.00
IJ48	Joiners, Code 148 slip-on plastic, insulating	12 / \$ 2.75
IJ25	Joiners, Code 125, slip-on plastic, insulating	12 / \$ 2.75
CJ48	Joiners, Code 148, plastic, cement-on	24 / \$ 1.75
CJ25	Joiners, Code 125, plastic, cement-on	24 / \$ 1.75



Louis R. Cross
 23682 Road 15½
 Chowchilla, CA 93610
 559 665-1001

O Scale
 First With Accurately
 Scaled Rail
 Since 1963



TIES

Cut from Sugar Pine

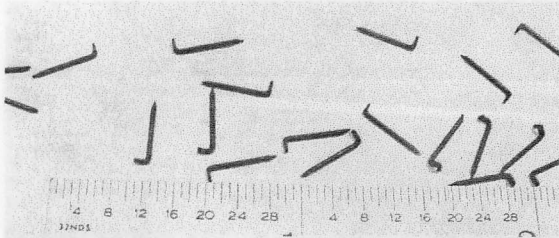
T 8-6	Ties, wooden, scale 7"x9", length 8'6"	750 / \$17.95
T 9-0	Ties, wooden, scale 7"x9", length 9'0"	750 / \$17.95
T 16-6	Ties, wooden, scale 7"x9", length 16'6"	100 / \$ 4.95
TT 8-6	Ties, wooden, scale 4"x9", length 8'6"	750 / \$17.95
TT 9-0	Ties, wooden, scale 4"x9", length 9'0"	750 / \$17.95
TT 16-6	Ties, wooden, scale 4"x9", length 16'6"	100 / \$ 4.95
TSK	Ties, wooden, turnout kit, 58 ties pre-cut, scale 7"x9" (Builds one (1) only #5 - #8 turnout)	1/ \$ 4.95

TRACK SPIKES

.025" dia. x 1/4" long

Blackened with very sharp points

With approximately 30 ties per foot and four spikes per tie, 120 spikes would be required for each foot of track. By spiking every other tie, only 60 spikes per foot would be needed. Orders may be in any ¼ or ½ oz. combinations. The 10 oz. price is good only for that weight.



Weight	Approx .Qty.	Price
½ oz.	800	\$ 6.25
3 oz.	4800	\$37.50
5 oz.	8000	\$62.50
10 oz.	16,000	\$91.50

TSM	Tortoise Switch Machines	1 ea.	\$ 18.95
		6 pack	\$110.00
		12 pack	\$210.00

PCR	Passenger Car Roofs, Streamline, Basswood 21¼"		\$ 10.00
TG-1	Passenger Car Tailgates, etched	Pair	\$ 3.95

Streamliner Tail Signs

DH-1	Drumhead, City of Los Angeles	\$ 69.95
DH-2	Drumhead, City of San Francisco	\$ 69.95
DH-3	Drumhead, City of Portland	\$ 69.95

P:48 Track Gauges

N-C-O Shops 13020 Broilli Dr. 775 852-2290
 Reno, NV 89511 pmart7421@sbcglobal.net

Shipping Information

Shipping Charges for Rail: \$7.00 for 1st 99', \$2.00 each additional 99' Please add \$4.60 packing charge for all hardware orders. California, add 7.5% sales tax. Give street address for FedEx delivery.